

LIFELINE

nutrition with a plan



**Eat smart in the advanced age
with the LIFELINE concept!**

- **perfect for your daily diet**
- **easy handling and failsafe preparation**
- **variety of flavours**
- **only water needed for preparation**
- **as complete system and as modular system**



Delight made in Austria



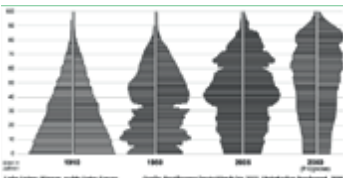
More information at:
lifeline.supply

Fit and healthy in advanced age

We get older, fewer and more colorful. That is the resümee of the demographic changes in Germany¹ according to futurologist Matthias Horx. At the same time, the amount of over-80ies will triple by 2050 due to higher life expectancy.

The elderly (75+) already have the highest care needs. This is because bodily functions change with age. Digestion and the immune system become weaker, appetite and ability to eat decline, fluid requirements increase, chewing and swallowing difficulties arise, and age-related diseases such as dementia and Alzheimer's, osteoporosis, diabetes and high blood pressure occur. The senses (taste, sight, smell) also decline.

By providing the right amount of nutrients, for example through food enriched with vitamins and minerals, energy-rich foods or liquid foods without lumpy or bloating ingredients, you can prevent deficiency symptoms and significantly improve or maintain quality of life.



¹ Developed industrial societies are getting older and older. At the same time, the proportion of childless couples is rising, and the average couple in Germany now has only 1,4 children.

The age pyramid at the beginning of the 20th century had already become an onion by the beginning of the 21st century. By 2050, this onion will have become a mushroom, with the upper end significantly wider than the lower end.

It is important to bear in mind that the uncertainty of such long-term population forecasts is significantly lower than what we are familiar with in our profession.

(Source: Federal Statistical Office)



Age-appropriate nutrition

This is where **LIFELINE**, the new nutritional concept from Nannerl, comes in. Drawing on decades of experience and expertise in the care sector, Nannerl GmbH & Co KG in Salzburg, with 50 years of experience in nutrition for hospitals, retirement homes, schools and commercial kitchens of all kinds, has developed the **LIFELINE** product range.

LIFELINE ensures age-appropriate nutrition and offers a wide range of products that cater to special dietary requirements and make it easy to implement a daily nutrition plan. **LIFELINE** products are enriched, visually and flavourfully diverse and intense, strongly seasoned and absolutely foolproof. They only need to be prepared with water and are ready to serve in no time at all.

Depending on your needs, the **LIFELINE** series offers a complete system with perfectly coordinated products (e.g. enriched **LIFELINE** milk drinks or enriched **LIFELINE** cream soups) or a modular system with standard products and nutritional supplements (**LIFELINE** maltodextrin or **LIFELINE** Protein 86 in combination with Nannerl cream soups), which you can use to supplement your diet and enrich existing meals.

In addition to simple and straightforward handling and perfect coordination with age-appropriate nutrition (e.g. through enrichment with vitamins and minerals or a high fibre content), the main focus in the development of the **LIFELINE** series was on a varied and versatile product range that can cover the entire daily schedule.

All products in our **LIFELINE** complete system are packaged in reusable, stackable plastic containers made from recyclable PE composite material.

Each pack (except for the protein bread) comes with a handy measuring spoon.





LIFELINE MODULAR SYSTEM

The modular system for easy enrichment and supplementation.

With the **LIFELINE MODULAR SYSTEM**, you get a modular system consisting of standard products and nutritional supplements that you can use to easily supplement your diet and enrich existing meals. Nannerl cream soups can be enriched perfectly with **LIFELINE Maltodextrin** or **Protein 86**. Ask your LIFELINE advisor which products are particularly suitable for this!



Age-appropriate nutrition

Carefully selected nutrients with a balanced mix of vitamins and minerals.



A variety of flavours!

Whether sweet, sour or spicy, always a treat for the taste buds!



Quick to prepare!

All you need is water!



LIFELINE COMPLETE SYSTEM

The complete system with perfectly coordinated products.

With the **LIFELINE COMPLETE SYSTEM** you get a range of perfectly coordinated and versatile products that you can use to cover or supplement your entire daily schedule (for example **Cappuccino 3 in 1** and **breakfast porridge enriched** in the morning, **tomato cream soup enriched** and **pudding in a cup semolina** at lunchtime, and **milk drink chocolate with hops** in the evening).



- 

Absolutely failsafe!
Easy handling thanks to matching measuring spoons and simple recipes.
- 

For your daily diet!
Coordinated complete products and versatile modular products!
- 

Supports the body!
Minerals and vitamins support the body.



More information at:
lifeline.supply



Item No.

2154

Contents:

2 kg

Gives:

33 portions

à 230 ml

(345 kcal/port.)



Measuring spoon no. 2

One level measuring spoon corresponds to approx. 15 g (75 kcal).

Milkshake Banana Flavour enriched

Milkshake an intense, fruity banana flavour, enriched with vitamins, minerals and fibre. Lightly sweetened, ready to serve.

Preparation:

Stir the powder well into the required amount of cold or hot water according to the table of contents.

The Milkshake is then ready to drink. **No milk is required for preparation!**

Table of contents

gram powder	litre water	gives cups à ca. 230 ml
60	0,2	1
2000	6,6	33

Areas of application:

Wherever fluid intake requires high energy density (high calorie count in small portions).

LIFELINE | Nutrition with a plan

+ Quick preparation

All you need is water!

+ Calcium

Required for maintaining normal bones and teeth.

+ Magnesium

Contributes to normal muscle function and normal protein synthesis.

+ Vitamin-Mix

Enriched with vitamins C, D3 and B12.

+ Zinc

Contributes to the maintenance of vision and normal cognitive function.

+ Iodine

Contributes to normal function of the nervous system.



More information at:
lifeline.supply



Item No.

2152

Contents:

2 kg

Gives:

33 portions

à 230 ml

(347 kcal/port.)



Measuring spoon no. 2

One level measuring spoon corresponds to approx. 15 g (75 kcal).

Milkshake Strawberry Flavour enriched

Milkshake the rich flavour of ripe strawberries, enriched with vitamins, minerals and fibre. Lightly sweetened, ready to serve.

Preparation:

Stir the powder well into the required amount of cold or hot water according to the table of contents.

The Milkshake is then ready to drink. **No milk is required for preparation!**

Table of contents

gram powder	litre water	gives cups à ca. 230 ml
60	0,2	1
2000	6,6	33

Areas of application:

Wherever fluid intake requires high energy density (high calorie count in small portions).

LIFELINE | Nutrition with a plan

+ Quick preparation

All you need is water!

+ Calcium

Required for maintaining normal bones and teeth.

+ Magnesium

Contributes to normal muscle function and normal protein synthesis.

+ Vitamin-Mix

Enriched with vitamins C, D3 and B12.

+ Zinc

Contributes to the maintenance of vision and normal cognitive function.

+ Iodine

Contributes to normal function of the nervous system.



More information at:
lifeline.supply



Item No.

2153

Contents:

2 kg

Gives:

33 portions

à 230 ml

(347 kcal/port.)



Measuring spoon no. 2

One level measuring spoon corresponds to approx. 15 g (75 kcal).

Milkshake Chocolate Hop enriched

Milkshake a pleasantly tart chocolate flavour, enriched with vitamins, minerals and fibre. Lightly sweetened, ready to serve.

Preparation:

Stir the powder well into the required amount of cold or hot water according to the table of contents.

The Milkshake is then ready to drink. **No milk is required for preparation!**

Table of contents

gram powder	litre water	gives cups à ca. 230 ml
60	0,2	1
2000	6,6	33

Areas of application:

Wherever fluid intake requires high energy density (high calorie count in small portions).

LIFELINE | Nutrition with a plan

+ Quick preparation

All you need is water!

+ Calcium

Required for maintaining normal bones and teeth.

+ Magnesium

Contributes to normal muscle function and normal protein synthesis.

+ Vitamin-Mix

Enriched with vitamins C, D3 and B12.

+ Zinc

Contributes to the maintenance of vision and normal cognitive function.

+ Iodine

Contributes to normal function of the nervous system.



More information at:
lifeline.supply



Item No.

2151

Contents:

2 kg

Gives:

33 portions

à 230 ml

(345 kcal/port.)



Measuring spoon no. 2

One level measuring spoon corresponds to approx. 15 g (75 kcal).

Milkshake Vanilla Flavour enriched

Milkshake a delicate bourbon vanilla flavour, enriched with vitamins, minerals and fibre. Lightly sweetened, ready to serve.

Preparation:

Stir the powder well into the required amount of cold or hot water according to the table of contents.

The Milkshake is then ready to drink. **No milk is required for preparation!**

Table of contents

gram powder	litre water	gives cups à ca. 230 ml
60	0,2	1
2000	6,6	33

Areas of application:

Wherever fluid intake requires high energy density (high calorie count in small portions).

LIFELINE | Nutrition with a plan

+ Quick preparation

All you need is water!

+ Calcium

Required for maintaining normal bones and teeth.

+ Magnesium

Contributes to normal muscle function and normal protein synthesis.

+ Vitamin-Mix

Enriched with vitamins C, D3 and B12.

+ Zinc

Contributes to the maintenance of vision and normal cognitive function.

+ Iodine

Contributes to normal function of the nervous system.



More information at:
lifeline.supply



Item No.

2150

Contents:

2 kg

Gives:

34 cups

à 230 ml

(352 kcal/cup)



Measuring spoon no. 4

One level measuring spoon corresponds to approx. 15 g (77 kcal).

Type Cappuccino 3 in 1 decaffeinated

The ideal start to the day! This easily soluble drink, enriched with vitamins and minerals and made from decaffeinated Arabica beans, tastes great and is easy to digest!

Preparation:

Stir the powder into cold or hot water according to the table of contents. The cappuccino is ready to drink immediately.

Table of contents

gram powder	litre water	gives cups à ca. 230 ml
60	0,2	1
2000	6,7	34

Areas of application:

Easy to store, quick to prepare drink with high energy density (high calorie count in small portions) and added benefits.

LIFELINE | Nutrition with a plan

+ Quick preparation

All you need is water!

+ Calcium

Required for maintaining normal bones and teeth.

+ Magnesium

Contributes to normal muscle function and normal protein synthesis.

+ Maltodextrin

Easily digestible carbohydrate.

+ Zinc

Contributes to the maintenance of vision and normal cognitive function.

+ soluble, decaffeinated coffee beans

Made from decaffeinated Arabica beans!



More information at:
lifeline.supply



Item No.

2155

Contents:

2 kg

Gives:

45 portions

à 145 g

(287 kcal/port.)



Measuring spoon no. 2

One level measuring spoon corresponds to approx. 15 g (66 kcal).

Breakfast Porridge enriched

The perfect start to the day. Lightly sweetened, with a pleasant taste, it is ready to serve immediately and can be refined as desired, e.g. with fresh fruit.

Preparation:

Stir the powder into the required amount of water according to the table of contents. Then leave to stand for 5 minutes. The porridge is then ready to serve.

Table of contents

gram powder	litre water	gives cups à ca. 145 g
450	1	10
2000	4,5	45

Areas of application:

Wherever a soft and homogeneous consistency and high energy density (high calorie count in small portions) are required for food intake.

LIFELINE | Nutrition with a plan

+ Quick preparation

All you need is water!

+ Calcium

Needed for maintaining normal bones and teeth.

+ Magnesium

Contributes to normal muscle function and normal protein synthesis.

+ Vitamin-Mix

Enriched with vitamins C, D3 and B12.

+ Zinc

Contributes to the maintenance of vision and normal cognitive function.

+ Iodine

Contributes to normal function of the nervous system.



More information at:
lifeline.supply



Item No.

2183

Contents:

1,2 kg

Gives:

ca. 5,2 kg bread



Protein Bread ready-made baking mix

Ready-made baking mix based on whole egg powder. For making protein bread that is easy to swallow.

Preparation:

Mix the ready-made mixture according to the table of contents with water and oil until smooth. Fill a greased loaf tin halfway and bake in a combi steamer at 95 °C for approx. 55 minutes. Leave to cool.

Table of contents

gram powder	litre water	litre oil	gives ca. kg bread
300	0,9	0,1	1,3
1200	3,6	0,4	5,2

Areas of application:

Wherever a soft, easily swallowed consistency and simple protein intake are desired when eating.

LIFELINE | Nutrition with a plan

+ SOURCE OF PROTEIN

(at least 12 % of the total calorific value of the food)

+ gluten-free and lactose-free



More information at:
lifeline.supply

LIFELINE
nutrition with a plan



Item No.

2184

Contents:

2 kg

Gives:

67 portions

à 230 g

(104 kcal/port.)



Measuring spoon no. 4

One level measuring spoon corresponds to approx. 15 g (52 kcal).

Fruit Porridge with sweetener enriched

The perfect start to the day. Ready to serve immediately. Enriched with vitamins and minerals. With a pleasant fruity taste (banana, orange and apple).

Preparation:

Sprinkle the powder into the liquid according to the table of contents and stir until the powder has completely dissolved. Allow to swell for five minutes and cool to the desired temperature.

Table of contents

gram powder	litre water	gives portions à ca. 230 g
30	0,2	1
2000	13,3	67

Areas of application:

Wherever a soft and homogeneous consistency and enrichment with vitamins and minerals is desired in food intake.

LIFELINE | Nutrition with a plan

+ various preparation methods

Cold or warm: can be prepared with milk, water or clear fruit juices (non-carbonated)!

+ Vitamin-Mix

Enriched with 11 different vitamins and 5 minerals.

+ Iron

Contributes to normal energy metabolism.

+ Vitamin D

Contributes to the normal function of the immune system.

+ Zinc

Contributes to the maintenance of normal skin, hair and nails.

+ Calcium

Needed for maintaining normal bones.



More information at:
lifeline.supply



Item No.

2157

Contents:

2 kg

Gives:

38 portions

à 200 ml

(340 kcal/port.)



Measuring spoon no. 4

One level measuring spoon corresponds to approx. 10 g (57 kcal).

Potato Cream Soup enriched

Cream soup with a spicy, intense potato flavour, enriched with vitamins, minerals and the fibre sources inulin and cellulose. Easy to prepare, ready to serve in seconds.

Preparation:

Stir the powder into the required amount of hot, no longer boiling water according to the table of contents and stir vigorously. The soup is ready to serve immediately.

Table of contents

gram powder	litre water	gives portions à ca. 200 ml
60	0,2	1
2000	6,6	38

Areas of application:

Wherever fluid intake requires high energy density (high calorie count in small portions).

LIFELINE | Nutrition with a plan

+ Quick preparation

All you need is water!

+ Calcium

Required for maintaining normal bones and teeth.

+ Magnesium

Contributes to normal muscle function and normal protein synthesis.

+ Source of fibre

With soluble inulin and cellulose.

+ Zinc

Contributes to the maintenance of vision and normal cognitive function.

+ Iodine

Contributes to normal function of the nervous system.



More information at:
lifeline.supply



Item No.

2158

Contents:

2 kg

Gives:

38 portions

à 200 ml

(348 kcal/port.)



Measuring spoon no. 4

One level measuring spoon corresponds to approx. 10 g (58 kcal).

Asparagus Cream Soup enriched

Cream soup with a pleasant asparagus flavour, enriched with vitamins, minerals and the fibre sources inulin and cellulose. Easy to prepare, ready to serve in seconds.

Preparation:

Stir the powder into the required amount of hot, no longer boiling water according to the table of contents and stir vigorously. The soup is ready to serve immediately.

Table of contents

gram powder	litre water	gives portions à ca. 200 ml
60	0,2	1
2000	6,6	38

Areas of application:

Wherever fluid intake requires high energy density (high calorie count in small portions).

LIFELINE | Nutrition with a plan

+ Quick preparation

All you need is water!

+ Calcium

Required for maintaining normal bones and teeth.

+ Magnesium

Contributes to normal muscle function and normal protein synthesis.

+ Source of fibre

With soluble inulin and cellulose.

+ Zinc

Contributes to the maintenance of vision and normal cognitive function.

+ Iodine

Contributes to normal function of the nervous system.



More information at:
lifeline.supply



Item No.

2156

Contents:

2 kg

Gives:

38 portions

à 200 ml

(330 kcal/port.)



Measuring spoon no. 4

One level measuring spoon corresponds to approx. 10 g (55 kcal).

Tomato Cream Soup enriched

Cream soup with an intense fruity tomato flavour, enriched with vitamins, minerals and the fibre sources inulin and cellulose. Easy to prepare, ready to serve in seconds.

Preparation:

Stir the powder into the required amount of hot, no longer boiling water according to the table of contents and stir vigorously. The soup is ready to serve immediately.

Table of contents

gram powder	litre water	gives portions à ca. 200 ml
60	0,2	1
2000	6,6	38

Areas of application:

Wherever fluid intake requires high energy density (high calorie count in small portions).

LIFELINE | Nutrition with a plan

+ Quick preparation

All you need is water!

+ Calcium

Required for maintaining normal bones and teeth.

+ Magnesium

Contributes to normal muscle function and normal protein synthesis.

+ Source of fibre

With soluble inulin and cellulose.

+ Zinc

Contributes to the maintenance of vision and normal cognitive function.

+ Iodine

Contributes to normal function of the nervous system.



Milk soup Chocolate cold swelling



Nutritious milk soup with a full-bodied chocolate flavour, which is ideal for enrichment using the LIFELINE modular system!

Can be prepared hot or cold! Can also be used as milk porridge!

Item No.	Box	gives	dosage	MHD
1032	2,5-kg-Box	14,5 l	190 g/L	12 M

Cold preparation: Stir the powder into cold water, leave to soak for 5 minutes and stir again.

Hot preparation: Quickly stir the powder into water heated to a maximum of 80°C.

Nutritional value per 100 ml soup

Energy	411 kJ/98 kcal
Fat	2,0 g
Carbohydrates	17 g
Protein	2,8 g



Milk soup Semolina cold swelling



Nutritious milk soup with easily digestible semolina, ideal for enrichment using the LIFELINE modular system!

Can be prepared hot or cold! Can also be used as milk porridge!

Item No.	Box	gives	dosage	MHD
1033	2,5-kg-Box	14,5 l	190 g/L	12 M

Cold preparation: Stir the powder into cold water, leave to soak for 5 minutes and stir again.

Hot preparation: Quickly stir the powder into water heated to a maximum of 80°C.

Nutritional value per 100 ml soup

Energy	367 kJ/88 kcal
Fat	1,7 g
Carbohydrates	16 g
Protein	1,9 g



Milk soup Vanilla flavour cold swelling



Nutritious milk soup with a mildly sweet vanilla flavour. Ideal for enrichment using the LIFELINE modular system!

Can be prepared hot or cold! Can also be used as milk porridge!

Item No.	Box	gives	dosage	MHD
1038	2,5-kg-Box	14,5 l	190 g/L	12 M

Cold preparation: Stir the powder into cold water, leave to soak for 5 minutes and stir again.

Hot preparation: Quickly stir the powder into water heated to a maximum of 80°C.

Nutritional value per 100 ml soup

Energy	348 kJ/83 kcal
Fat	2,3 g
Carbohydrates	12 g
Protein	2,9 g



More information at:
lifeline.supply



Item No.

2159

Contents:

2,3 kg

Gives:

40 portions

à 185 g

(254 kcal/port.)



Measuring spoon no. 4

One level measuring spoon corresponds to approx. 14 g (74 kcal).

Mug Pudding Semolina enriched & amylase-resistant

Soft spoon pudding with a pleasant semolina flavour. Ideal as a dessert or as a snack that is always available.

Preparation:

Stir the powder into the required amount of hot water according to the table of contents and stir quickly until the powder has completely dissolved. Leave to soak for one minute.

Table of contents

gram powder	litre water	gives cups à ca. 185 g
70	0,15	1
2300	5	40

Areas of application:

Wherever a soft and homogeneous consistency and high energy density (high calorie count in small portions) are required for food intake.

LIFELINE | Nutrition with a plan

+ Quick preparation

All you need is water!

+ amylase-resistant

Consistent consistency even when saliva is present ensures safe swallowing.

+ Maltodextrin

Easily digestible carbohydrate.

+ enriched

One cup (185 ml) contains 1310 kJ.

+ increased fat content

Milk fat and pure vegetable fat!

+ lactose

Supports digestive functions.



More information at:
lifeline.supply



Item No.

2161

Contents:

2,3 kg

Gives:

40 portions

à 185 g

(366 kcal/port.)



Messlöffel Nr. 4

Ein gestrichener Messlöffel entspricht ca. 14 g (73 kcal)

Mug Pudding Chocolate enriched & amylase-resistant

Soft spoon pudding with an intense chocolate flavour. Ideal as a dessert or as a snack that is always available.

Preparation:

Stir the powder into the required amount of hot water according to the table of contents and stir quickly until the powder has completely dissolved. Leave to soak for one minute.

Table of contents

gram powder	litre water	gives cups à ca. 185 g
70	0,15	1
2300	5	40

Areas of application:

Wherever a soft and homogeneous consistency and high energy density (high calorie count in small portions) are required for food intake.

LIFELINE | Nutrition with a plan

+ Quick preparation

All you need is water!

+ amylase-resistant

Consistent consistency even when saliva is present ensures safe swallowing.

+ Maltodextrin

Easily digestible carbohydrate.

+ angereichert

One cup (185 g) contains 1254 kJ.

+ increased fat content

Milk fat and pure vegetable fat!

+ lactose

Supports digestive functions.



More information at:
lifeline.supply



Item No.

2160

Contents:

2,3 kg

Gives:

40 portions

à 185 g

(263 kcal/port.)



Measuring spoon no. 4

One level measuring spoon corresponds to approx. 14 g (77 kcal).

Mug Pudding Vanilla Flavour enriched & amylase-resistant

Soft spoon pudding with an intense vanilla flavour. Ideal as a dessert or as a snack that is always available.

Preparation:

Stir the powder into the required amount of hot water according to the table of contents and stir quickly until the powder has completely dissolved. Leave to soak for one minute.

Table of contents

gram powder	litre water	gives cups à ca. 185 g
70	0,15	1
2300	5	40

Areas of application:

Wherever a soft and homogeneous consistency and high energy density (high calorie count in small portions) are required for food intake.

LIFELINE | Nutrition with a plan

+ Quick preparation

All you need is water!

+ amylase-resistant

Consistent consistency even when saliva is present ensures safe swallowing.

+ Maltodextrin

Easily digestible carbohydrate.

+ enriched

One cup (185 g) contains 1306 kJ.

+ increased fat content

Milk fat and pure vegetable fat!

+ lactose

Supports digestive functions.



Cold Fruit Bowl Pear Flavour



Liquid, slightly creamy fruit cold soup with the sweet taste of sun-ripened pears.

Free from major allergens! Can also be used as a fruit soup!

Item No.	Box	gives	dosage	MHD
1143	3-kg-Box	72 port. à 250 ml	180 g/L	24 M

Preparation: Stir the powder into cold water. Refrigerate and leave to soak for 10 minutes. Stir well again and serve cold.

Nutritional value per 100 g cold soup

Energy	296 kJ/71 kcal
Fat	< 0,5 g
Carbohydrates	17 g
Protein	< 0,5 g



Cold Fruit Bowl Strawberry Flavour



Liquid, slightly creamy fruit cold soup with the intense flavour of fresh strawberries.

Free from major allergens! Can also be used as a fruit soup!

Item No.	Box	gives	dosage	MHD
1132	3-kg-Box	72 port. à 250 ml	180 g/L	24 M

Preparation: Stir the powder into cold water. Refrigerate and leave to soak for 10 minutes. Stir well again and serve cold.

Nutritional value per 100 g cold soup

Energy	301 kJ/72 kcal
Fat	< 0,5 g
Carbohydrates	17 g
Protein	< 0,5 g



Cold Fruit Bowl Tropic Flavour



A liquid, slightly creamy fruit cold drink with the exotic flavour of tropical fruits such as passion fruit, pineapple and banana.

Free from major allergens! Can also be used as a fruit soup!

Item No.	Box	gives	dosage	MHD
1136	3-kg-Box	72 port. à 250 ml	180 g/L	24 M

Preparation: Stir the powder into cold water. Refrigerate and leave to soak for 10 minutes. Stir well again and serve cold.

Nutritional value per 100 g cold soup

Energy	300 kJ/72 kcal
Fat	< 0,5 g
Carbohydrates	17 g
Protein	< 0,5 g





More information at:
lifeline.supply



L-Fiber Dietary fibre

Item No.

2170

Contents:

200 g



Measuring spoon no. 12

One level measuring spoon corresponds to approx. 3 g (6,3 kcal).

Supplementary nutrition for an adequate supply of plant-based fibre to support natural bowel function.

Areas of application:

L-fiber supports the intestinal flora and helps regulate bowel function.

We generally recommend a standard dosage of 15–25 g per day.

LIFELINE | Modular System

+ Quick preparation

Easily soluble!

+ Purely plant-based fibre

From partially hydrolysed guar gum.

+ Flavour enhancement

Improves the taste, texture and mouthfeel.

+ Rapid saturation

Increase the volume of food and ensure a long-lasting feeling of satiety.

+ Supports natural bowel function

Regulates consistency, quantity and frequency.

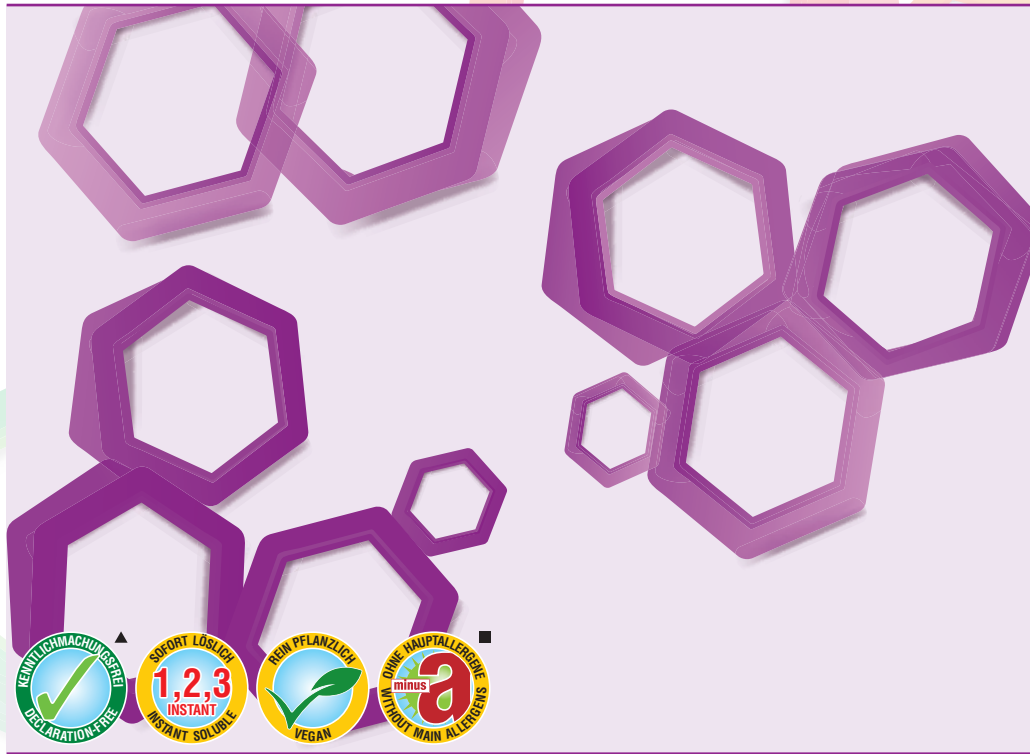
+ Individually adjustable dosage

The dosage depends on the desired requirement.



More information at:
lifeline.supply

LIFELINE
nutrition with a plan



Maltodextrin neutral flavour

Supplementary nutrition to ensure an adequate supply of maltodextrin in cases of increased energy requirements and energy deficits.

Areas of application:

Wherever increased calorie intake is required or carbohydrate enrichment is desirable.

LIFELINE | Modular System

+ Quick preparation

Easily soluble!

+ Easy to combine

e.g. in combination with **LIFELINE Milk Protein** or **LIFELINE Protein 86** to create high-calorie drinks.

+ Purely plant-based

Suitable for people with a vegan lifestyle.

+ Versatile

Does not alter the volume, consistency or taste of food or beverages.

Item No.

2165

Contents:

2 kg



Measuring spoon no. 12

One level measuring spoon corresponds to approx. 5 g (20 kcal).



More information at:
lifeline.supply

LIFELINE
nutrition with a plan



Instant milk protein easily soluble protein

Supplementary nutrition to ensure adequate protein intake in cases of insufficient protein intake, protein loss or increased protein requirements.

Areas of application:

Wherever a soft and homogeneous consistency and high energy density (high calorie count in small portions) are required for food intake.

LIFELINE | Modular System

+ Quick preparation

Highly soluble!

+ Excellent nutritional properties

Just 3-4 tablespoons cover approx. 25% of daily calcium requirement (60 mg/tablespoon).

+ Very digestible

Easily absorbed and digestible due to high biological availability

+ assumes important functions

Contributes to the maintenance and increase of muscle mass.

Item No.

2180

Contents:

1,2 kg



Measuring spoon no. 12

One level measuring spoon is equivalent to approx. 4.5 g (17 kcal).

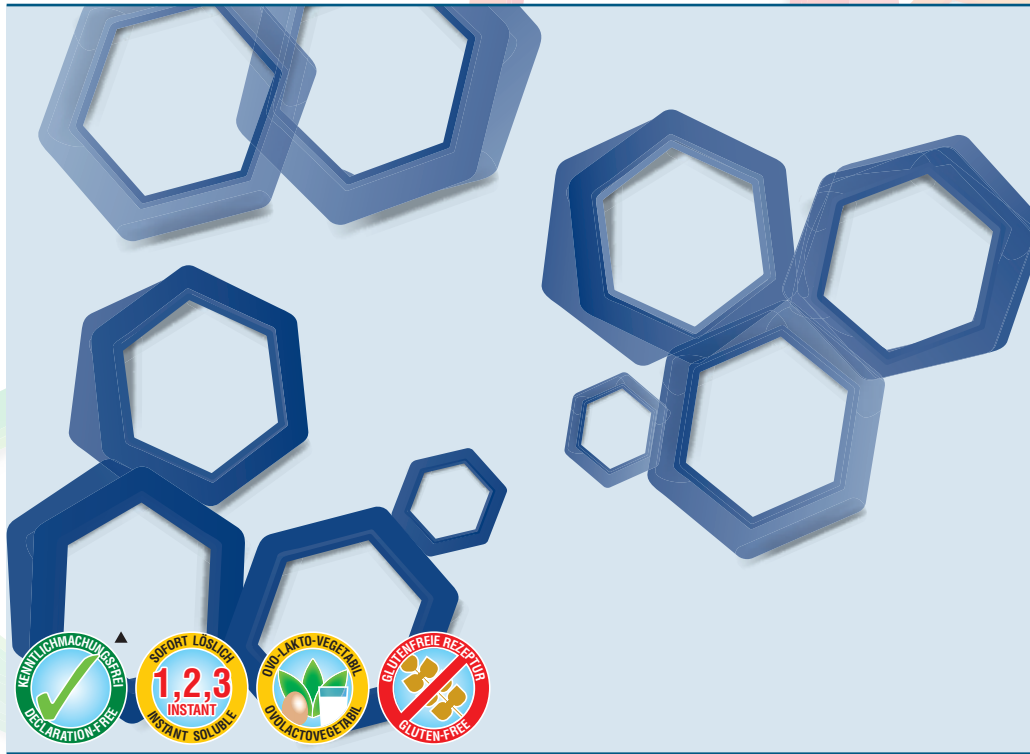


Delight made in Austria



More information at:
lifeline.supply

LIFELINE
nutrition with a plan



Protein 86 enriched milk protein

Supplementary nutrition from milk protein, enriched with a vitamin and mineral mixture.

Areas of application:

Wherever there is an increased protein requirement in the diet. It is suitable as a low-carbohydrate source of protein. Particularly suitable for shakes and milk drinks.

Item No.

2167

Contents:

1,5 kg



Measuring spoon no. 12

One level measuring spoon is equivalent to approx. 4.5 g (17 kcal).

LIFELINE | Modular System

+ Quick preparation

Easily soluble, excellent emulsifying properties!

+ Calcium

Is needed for the maintenance of normal bones and normal teeth.

+ Zinc

Contributes to the maintenance of normal skin, nails, hair and normal vision.

+ Vitamin-Mix

Enriched with vitamins B1, B6, B12, C, E, pantothenic acid and niacin.

+ Biotin

Contributes to the normal function of the nervous system and the maintenance of normal mucous membranes.

+ Folic acid

Contributes to the normal function of the immune system and to the reduction of fatigue.



More information at:
lifeline.supply

LIFELINE
nutrition with a plan



Instant Starch neutral flavour

Item No.

2168

Contents:

1,5 kg



Measuring spoon no. 12

One level measuring spoon corresponds to approx. 4 g (15 kcal).

Pure vegetable starch for thickening liquids, puréed foods, soups and sauces. It dissolves instantly in both hot and cold liquids without clumping, is freeze-stable and suitable for cook&chill applications.

Areas of application:

Ideal for thickening food and drinks for people with chewing and swallowing difficulties. Thickening makes it easier to eat and swallow food and enriches the food with energy.

LIFELINE | Modular System

+ Quick preparation

Easily soluble!

+ Suitable for cook&chill

Ideal for quickly thickening hot and cold dishes.

+ No thickening

LIFELINE Instant Starch is thermally stable.

+ Purely plant-based

Made from potato starch and suitable for people with a vegan lifestyle.

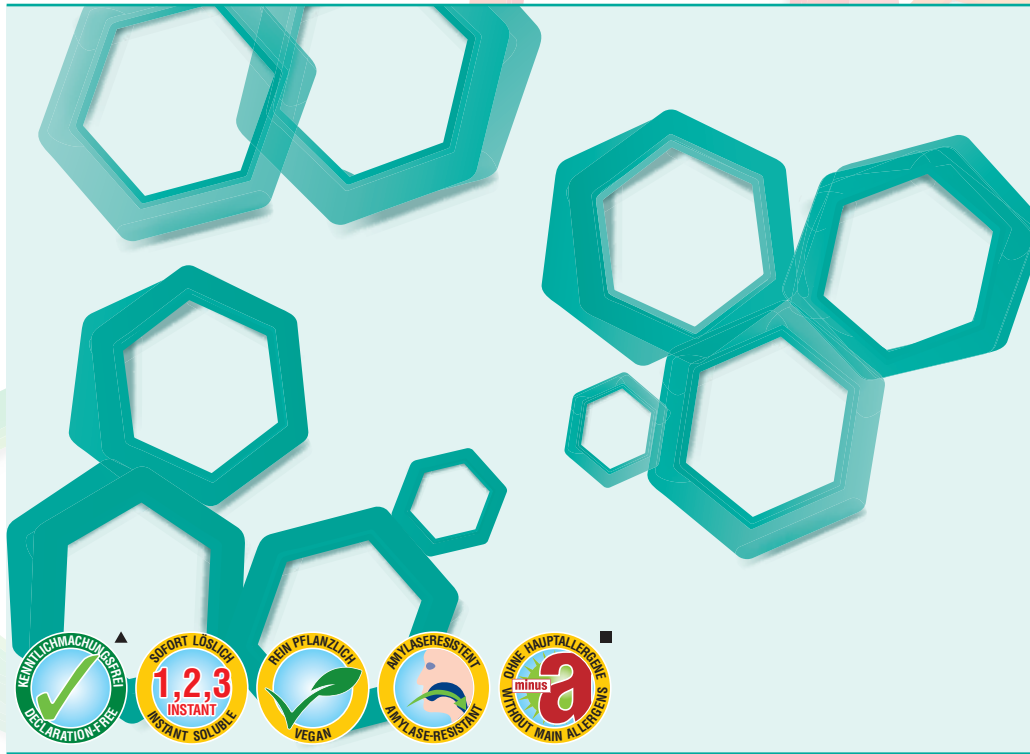
Nannerl
SALZBURG

Delight made in Austria



More information at:
lifeline.supply

LIFELINE
nutrition with a plan



Thickener cold-sprouting & amylase-resistant

Completely soluble in cold and warm dishes, odourless and tasteless. It is resistant to cold and heat: thickened dishes can be heated, frozen or cooled without any problems.

Areas of application:

Ideal for thickening food and beverages. Makes eating and swallowing easier. Amylase-resistant: maintains the consistency of food even when it comes into contact with saliva.

LIFELINE | Nutrition with a plan

+ Easy to work with

Easily soluble, no lumps!

+ Purely plant-based

Suitable for vegan diets.

+ Amylase-resistant

The consistency of thickened foods remains stable even when in contact with saliva!

+ versatile in application

odourless and tasteless

Item No.

2162

Contents:

2 kg



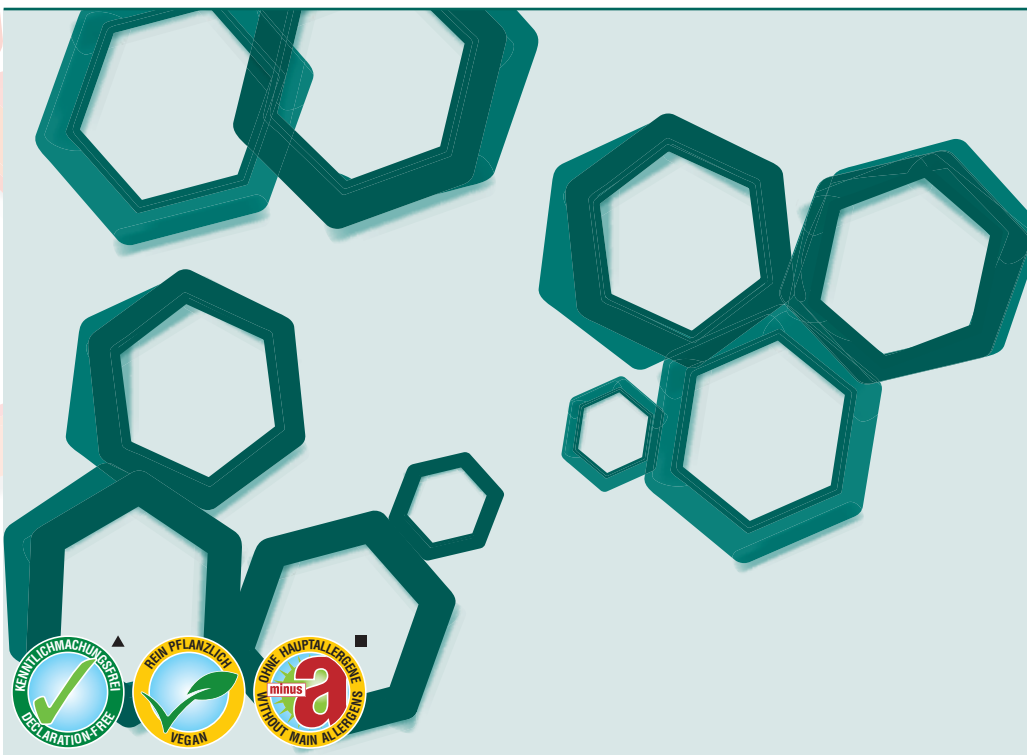
Measuring spoon no. 12

One level measuring spoon corresponds to approx. 5,5 g (21 kcal).



More information at:
lifeline.supply

LIFELINE
nutrition with a plan



Item No.

2169

Contents:

2 kg



Measuring spoon no. 12

One level measuring spoon is equivalent to approx. 4,5 g (12 kcal).

Thickener for puréed and jellied food

LIFELINE thickener for puréed and jellied foods transforms fruit, vegetables, meat, fish, etc. into heat-resistant, jellied dishes. It is completely soluble in cold and warm foods and is odourless and tasteless.

Areas of application:

LIFELINE thickener for puréed and jellied foods produces a heat-resistant and firm jelly that is the ideal food form for those with chewing and swallowing difficulties.

Please note:

During heating, it is essential to allow the mixture to boil above 95°C. A cooling temperature of < 10°C guarantees optimum regenerability.

LIFELINE | Nutrition with a plan

+ Easy to work with

Easily soluble, no lumps!

+ freeze and thaw stable

Thickened foods can be heated, frozen or cooled without any problems!

+ Purely plant-based

Suitable for people with a vegetarian lifestyle.

+ versatile in application

Can be easily poured into moulds and, once set, turned out, cut, etc.

Nannerl
SALZBURG

Delight made in Austria



More information at:
lifeline.supply

LIFELINE
nutrition with a plan



Item No.

2181

Contents:

250 g



Measuring spoon no. 8

One level measuring spoon corresponds to approx. 1,2 g (3,8 kcal).

Thickener clear intense

cold-swelling, amylase-resistant & clearly soluble

Spray-dried, clearly soluble thickener based on xanthan gum. Even small amounts result in a significant increase in consistency. Dissolves completely and does not affect colour, smell or taste.

Areas of application:

LIFELINE Thickener clear intense is perfect for thickening food and drinks. Makes eating and swallowing food easier.

Please note:

The dosage may vary depending on the temperature and viscosity of the liquid/food to be thickened or the desired consistency. **Even small amounts lead to a significant increase in consistency.**

LIFELINE | Nutrition with a plan

+ Easy to work with

Easily soluble, no lumps!

+ freeze and thaw stable

Thickened foods can be heated, frozen or cooled without any problems!

+ Purely plant-based

Suitable for people with a vegan lifestyle.

+ clearly soluble

Does not affect the colour, smell or taste of food and drinks!



More information at:
lifeline.supply

LIFELINE
nutrition with a plan



Supplementary Nutrition neutral flavour

Valuable nutritional supplement made from vegetable oil, milk protein, maltodextrin, fibre, vitamins and minerals for enriching food and beverages.

Areas of application:

Wherever increased energy, vitamin and mineral requirements need to be met. To improve tolerability, we use soluble and insoluble fibre.

Item No.

2164

Contents:

2 kg



Measuring spoon no. 4

One level measuring spoon corresponds to approx. 16 g (68 kcal).

LIFELINE | Modular System

+ Quick preparation

Easily soluble!

+ Calcium

Is needed for the maintenance of normal bones and normal teeth.

+ Magnesium

Contributes to normal muscle function and normal protein synthesis.

+ Vitamin-Mix

Enriched with vitamins B1, B6, B12, C, E, pantothenic acid and niacin.

+ Biotin

Contributes to the normal function of the nervous system and the maintenance of normal mucous membranes.

+ Folic acid

Contributes to the normal function of the immune system and to the reduction of fatigue.

Nannerl
SALZBURG

Delight made in Austria



Breakfast porridge with fruit cocktail

For 10 servings (à 145 g):

- 450 g **LIFELINE breakfast porridge** (30 level measuring spoons)
- 700 ml water
- 300 ml fruit juice
- approximately 300 g fruit cocktail or seasonal fruit



A tasty breakfast porridge with a fruit cocktail from a tin or fresh seasonal fruit. For people with swallowing difficulties, it is advisable to purée the fruit.

1. Mix water with fruit juice and bring to the boil.
2. Add the required amount of LIFELINE breakfast porridge.
3. Stir thoroughly.
4. Add fruit, done.

Depending on the severity of swallowing difficulties, it is advisable to purée the fruit beforehand.



Pureed meals with vegetables

Recommended recipe for preparing puréed and jellied meals with vegetables.

For 10 servings (à ca. 100 g):

- 50 g LIFELINE Thickener for puréed food
- 750 ml of liquid
- 250 g vegetables



Table of contents

gram powder	litre liquid	gram vegetables	gives puréed food in gram
50	0,75	250	1050
2000	30	10000	42000

1. Mix the desired amount of vegetables with the liquid (Nannerl vegetable stock [item no. 1904 + 1905] ensures excellent flavour) and purée.
2. Add thickener to the puréed mixture according to the quantity specified, stir thoroughly and heat to at least 90 °C, preferably bringing to the boil.
3. Shape the food into the desired form (e.g. silicone mould), preferably chill overnight to below 10 °C (ideally at refrigerator temperature).
4. Regenerate in a combi steamer or using induction (not in a microwave).



Breakfast porridge with fresh apples

For 10 servings (à 145 g):

- 450 g LIFELINE Frühstücksbrei (30 level measuring spoons)
- 700 ml water
- 300 ml fruit juice
- approx. 300 g apples



A tasty breakfast porridge with fresh apples.

For people with swallowing difficulties, it is recommended to purée the apples.

1. Dice or grate the apples.
2. Mix water with fruit juice and bring to the boil.
3. Add the required amount of LIFELINE breakfast porridge.
4. Stir thoroughly.
5. Add apples, done.



Pureed meals with meat

Recommended recipe for preparing puréed and jellied meals with meat.

For 10 servings (à ca. 100 g):

- 50 g LIFELINE Thickener for puréed food
- 750 ml of liquid
- 250 g meat



Table of contents

gram powder	litre liquid	gram meat	gives puréed food in gram
50	0,75	250	1050
2000	30	10000	42000

1. Mix the desired amount of meat with the liquid (for a spicy flavour, we recommend Nannerl Clear Roast Gravy [item no. 571]) and purée.
2. Add thickener to the puréed mixture according to the quantity specified, stir thoroughly and heat to at least 90 °C, preferably bringing to the boil.
3. Shape the food into the desired form (e.g. silicone mould), preferably overnight. Chill to below 10 °C (ideally at refrigerator temperature).
4. Regenerate in a combi steamer or using induction (not in a microwave).



Pureed meals with side dishes

Guideline recipe for preparing pureed and jellied meals with side dishes.

For 10 servings (à ca. 100 g):

- 50 g LIFELINE Thickener for pureed food
- 750 ml of liquid
- 250 g side dish (e.g. pasta)



Table of contents

gram powder	litre liquid	gram supplement	gives pureed food in gram
50	0,75	250	1050
2000	30	10000	42000

1. Mix the desired amount of side dish (e.g. pasta) with the liquid (Nannerl vegetable stock [item no. 1904+1905] ensures excellent flavour) and purée.

TIPP: If you replace some of the liquid with cream, the pureed food will be particularly tasty!

2. Add thickener to the pureed mixture according to the quantity specified, stir thoroughly and heat to at least 90 °C, preferably to boiling point.

3. Shape the food into the desired form (e.g. silicone mould), preferably chill overnight to below 10 °C (ideally at refrigerator temperature).

4. Regenerate in a combi steamer or using induction (not in a microwave).



Pureed meals with mashed potatoes

Recommended recipe for preparing puréed and jellied meals with mashed potatoes.

For 10 servings (à ca. 100 g):

- 50 g LIFELINE Thickener for puréed food
- 500 ml of liquid
- 500 g mashed potatoes



Table of contents

gram powder	litre liquid	gram ready-made purée	gives puréed food in gram
50	0,5	500	1050
2000	20	20000	42000

1. Mix the desired amount of mashed potatoes (Nannerl mashed potatoes with milk [item no. 1930] are ideal, for example) with the liquid (Nannerl vegetable stock [item no. 1904+1905] ensures a full flavour) and mash.
2. Add thickener to the puréed mixture according to the quantity specified, stir thoroughly and heat to at least 90 °C, preferably bringing to the boil.
3. Shape the food into the desired form (e.g. silicone mould), preferably chill overnight to below 10 °C (ideally at refrigerator temperature).
4. Regenerate in a combi steamer or using induction (not in a microwave).

IMPACT & FUNCTION

LIFELINE products are designed to support nutrition suitable for seniors.

For this reason, we have added special vitamin and mineral mixtures to selected LIFELINE products.

For the additives listed below, the health claims shown opposite are considered proven and permissible in accordance with EU Regulation No. 432/2012.

All LIFELINE milkshakes are enriched with **calcium, folic acid, magnesium, zinc, iodine** and a vitamin mix (**vitamin C, vitamin D3** and **vitamin B12**), among other things.



LIFELINE
nutrition with a plan

Biotin

- contributes to normal energy metabolism
- contributes to the normal functioning of the nervous system
- contributes to normal macronutrient metabolism
- contributes to normal psychological function
- contributes to the maintenance of normal hair
- contributes to the maintenance of normal mucous membranes
- contributes to the maintenance of normal skin

Calcium

- contributes to normal blood clotting
- contributes to normal energy metabolism
- contributes to normal muscle function
- contributes to the normal function of digestive enzymes
- is needed for the maintenance of normal bones
- is needed for the maintenance of normal teeth

Iron

- contributes to normal cognitive function
- contributes to normal energy metabolism
- contributes to the normal formation of red blood cells and haemoglobin
- contributes to normal oxygen transport in the body
- contributes to the normal function of the immune system
- contributes to the reduction of tiredness and fatigue

Folic acid

- contributes to normal amino acid synthesis
- contributes to normal blood formation
- contributes to normal homocysteine metabolism
- contributes to normal psychological function
- contributes to the normal function of the immune system
- contributes to the reduction of tiredness and fatigue

Potassium

- contributes to the normal functioning of the nervous system
- contributes to normal muscle function
- contributes to maintaining normal blood pressure

Magnesium

- contributes to the reduction of tiredness and fatigue
- contributes to electrolyte balance
- contributes to normal energy metabolism
- contributes to the normal functioning of the nervous system
- contributes to normal muscle function
- contributes to normal protein synthesis
- contributes to normal psychological function
- contributes to the maintenance of normal bones
- contributes to the maintenance of normal teeth

IMPACT & FUNCTION

LIFELINE products are designed to support nutrition suitable for seniors.

For this reason, we have added special vitamin and mineral mixtures to selected LIFELINE products.

For the additives listed below, the health claims shown opposite are considered proven and permissible in accordance with EU Regulation No. 432/2012.

LIFELINE Typ Cappuccino 3 in 1 is enriched with a mix of **iodine**, **folic acid**, **zinc** and **vitamin C**, among other things, and contains **milk protein** as a source of protein.



LIFELINE
nutrition with a plan

Niacin

- contributes to normal energy metabolism
- contributes to the normal functioning of the nervous system
- contributes to normal psychological function
- contributes to the maintenance of normal mucous membranes
- contributes to the maintenance of normal skin
- contributes to the reduction of tiredness and fatigue

Pantothenic acid

- contributes to normal energy metabolism
- contributes to the reduction of tiredness and fatigue
- contributes to normal mental performance

Riboflavin (Vitamin B2)

- contributes to normal energy metabolism
- contributes to the normal functioning of the nervous system
- contributes to the maintenance of normal mucous membranes
- contributes to the maintenance of normal red blood cells
- contributes to the maintenance of normal skin
- contributes to the maintenance of normal vision
- contributes to normal iron metabolism
- helps protect cells from oxidative stress
- contributes to the reduction of tiredness and fatigue

Phosphorus

- contributes to normal energy metabolism
- contributes to the normal function of the cell membrane
- contributes to the maintenance of normal bones
- contributes to the maintenance of normal teeth

Thiamine (Vitamin B1)

- contributes to normal energy metabolism
- contributes to the normal functioning of the nervous system
- contributes to normal psychological function
- contributes to normal heart function

Vitamin B12

- contributes to normal energy metabolism
- contributes to the normal functioning of the nervous system
- contributes to normal homocysteine metabolism
- contributes to normal psychological function
- contributes to the normal formation of red blood cells
- contributes to the normal function of the immune system
- contributes to the reduction of tiredness and fatigue



Delight made in Austria

IMPACT & FUNCTION

LIFELINE products are designed to support nutrition suitable for seniors.

For this reason, we have added special vitamin and mineral mixtures to selected LIFELINE products.

For the additives listed below, the health claims shown opposite are considered proven and permissible in accordance with EU Regulation No. 432/2012.

LIFELINE breakfast porridge contains calcium, folic acid, magnesium, zinc, iodine, vitamin C, vitamin D3 and vitamin B12, as well as cellulose and inulin as dietary fibre.



LIFELINE
nutrition with a plan

Vitamin B6

- contributes to normal cysteine synthesis
- contributes to normal energy metabolism
- contributes to the normal functioning of the nervous system
- contributes to normal homocysteine metabolism
- contributes to normal protein and glycogen metabolism
- contributes to normal psychological function
- contributes to the normal formation of red blood cells
- contributes to the normal function of the immune system
- contributes to the reduction of tiredness and fatigue
- contributes to the regulation of hormonal activity

Vitamin C

- contributes to the normal function of the immune system during and after intense physical exercise
- contributes to collagen formation for normal blood vessel function
- contributes to collagen formation for normal bone function
- contributes to collagen formation for normal cartilage function
- contributes to collagen formation for normal gum function
- contributes to collagen formation for normal skin function
- contributes to collagen formation for normal tooth function
- contributes to normal energy metabolism
- contributes to the normal functioning of the nervous system
- contributes to normal psychological function
- contributes to the normal function of the immune system
- helps to protect cells from oxidative stress
- contributes to the reduction of tiredness and fatigue
- increases iron absorption

Vitamin D3

- contributes to normal absorption/utilisation of calcium and phosphorus
- contributes to normal calcium levels in the blood
- contributes to the maintenance of normal bones
- contributes to the maintenance of normal muscle function
- contributes to the maintenance of normal teeth
- contributes to the normal function of the immune system

Vitamin E

- helps protect cells from oxidative stress

IMPACT & FUNCTION

LIFELINE products are designed to support nutrition suitable for seniors.

For this reason, we have added special vitamin and mineral mixtures to selected **LIFELINE** products.

For the additives listed below, the health claims shown opposite are considered proven and permissible in accordance with EU Regulation No. 432/2012.

All **LIFELINE cream soups** are enriched with **calcium, folic acid, zinc, iodine** and **vitamin B1**, among other things, and contain **cellulose** and **inulin** as dietary fibre.



LIFELINE
nutrition with a plan

Zinc

- contributes to normal acid-base metabolism
- contributes to normal carbohydrate metabolism
- contributes to normal cognitive function
- contributes to normal DNA synthesis
- contributes to normal fertility and normal reproduction
- contributes to normal macronutrient metabolism
- contributes to normal fatty acid metabolism
- contributes to normal vitamin A metabolism
- contributes to normal protein synthesis
- contributes to the maintenance of normal bones
- contributes to the maintenance of normal hair
- contributes to the maintenance of normal nails
- contributes to the maintenance of normal skin
- contributes to maintaining normal testosterone levels in the blood
- contributes to the maintenance of normal vision
- contributes to the normal function of the immune system
- helps protect cells from oxidative stress
- has a function in cell division



Delight made in Austria

QUALITY SEALS

Here you can see at a glance the suitability and characteristics of **LIFELINE** products.

Our quality seals are a sign that the latest nutritional findings and trends are immediately incorporated into product development.

LIFELINE cream soups and milk-shakes contains soluble fibre inulin and insoluble fibre cellulose, which support normal bowel function.



LIFELINE
nutrition with a plan



suitable for cook & chill

After cooking, the food is rapidly cooled to storage temperature in a blast chiller and regenerated before distribution.



amylase-resistant

Products with this seal are bound in such a way that the enzyme amylase contained in saliva cannot destroy the bond, making them easier to swallow.



declaration-free

Products with this seal do not contain any ingredients that must be listed on menus in accordance with Section 5 of the Food Additives Implementation Regulation.



without main allergens

These products are manufactured according to recipes that are free from the 14 main allergens listed in the Food Information Regulation (LMIV).



suitable for sauce

Products with this seal are also suitable for making a sauce. The mixing ratio for the sauce is indicated separately on the packaging.



onion-free

Products with this seal do not contain onions. Onions can cause flatulence and stomach ache in sensitive individuals.



instant soluble

When cooking and frying, our instant products can be sprinkled or stirred directly into liquids of any temperature without clumping.



lactose-free

Lactose-free according to recipe. Lactose intolerance can cause bloating, flatulence, abdominal pain, diarrhoea and nausea in those affected.



ovolactovegetarian

Products with this symbol are based on an »ovolactovegetable recipe« (i.e. purely from plant-based ingredients, milk, milk products and eggs).



gluten-free

Products with this seal have been produced without the addition of gluten and are suitable for people who suffer from gluten intolerance.



vegan

Products with this symbol are based on a purely plant-based recipe free from any animal products. They are suitable for vegan and vegetarian diets.



yeast-free

Products with this symbol are based on a recipe without added yeast extract and are therefore ideal for people who cannot tolerate yeast.



Dietary fibre source

For products containing at least 3 g of fibre per 100 g of finished product or 1,5 g of fibre per 100 kcal. Supports normal bowel function.



palm oil-free

Products with this symbol are based on a recipe that does not contain palm oil or palm fat.

MAIN ALLERGENS

A brief overview of the 14 main allergens and examples of products in which they may be found.



EGGS

These include: eggs from chickens, geese, ducks, turkeys, quails, pigeons, ostriches

Included in: egg yolks, egg whites, beaten egg whites, minced meat, meringues, cakes, ice cream, sauces, mayonnaise, etc.



PEANUTS

These include: Peanuts, peanut oil (also as frying fat), peanut butter

Included in: vegetarian meat substitutes, dressings, pesto, exotic cuisines (e.g. Asian, Indian), nut mixes



FISH

These include: all fish: raw, cooked, canned, caviar, roe, paste

Included in: sashimi, surimi, sushi, Worcestershire sauce, seasoning sauces, paella, vitello tonnato, etc.



CEREALS

These include: wheat, barley, oats, rye, spelt, green spelt, einkorn, emmer, kamut

Included in: bread, baked goods and pasta, cakes, biscuits, muesli, etc.



CRUSTACEANS

These include: prawns, crayfish, shrimp, lobster, crab, krill, langoustines, scampi, etc.

Included in: sashimi, surimi, bouillabaisse, crab butter, etc.



LUPINS

These include: all types of spurge plants

Included in: plant-based protein (lupins) in baked goods and vegetarian meat substitutes, lupin flour, lupin sprouts, etc.



MILK & MILK PRODUCTS

These include: milk, butter, cream, crème fraîche, cheese, quark, yoghurt

Included in: margarine, sour cream, whipped cream, vegetable spreads, chocolate, baked goods, etc.



NUTS

These include: cashew nuts, hazelnuts, macadamia nuts, almonds, pecans, Brazil nuts, pistachios, walnuts

Included in: nut oils (hazelnut, walnut, almond), nut paste, nut butter, etc.



SULPHUR

These include: Sulphur dioxide and sulphite (more than 10 mg/kg or mg/l).

Included in: Wine (sulphurised), other alcoholic beverages, sulphurised dried fruit, grated horseradish products, etc.



CELERY

These include: celeriac, celery seeds, stalk celery or white celery

Included in: vegetable juices, condiments, spice mixes, bouillons, salads, snacks, sauces, etc.



MUSTARD

These include: Mustard/mustard, mustard seeds, mustard oil, mustard sprouts, mustard leaves and mustard

flowers
Included in: Marinades, soups, sauces, chutneys, curries, spice mixes, sausages, etc.



SESAME

These include: sesame seeds, oil, butter, flour, salt, seasoning pastes containing sesame

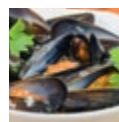
Included in: bread, pastries, crackers, breakfast cereals, desserts, falafel, hummus, etc.



SOY

These include: soybeans, soybean sprouts, soybean flour, soybean semolina, soybean milk, soybean protein,

soybean oil
Included in: desserts, tofu, miso, tempeh, seasoning sauces, spreads, surimi, baked goods, etc.



MOLLUSCS

These include: Shellfish (e.g. mussels), snails, squid, octopus [octopus, pulpo]

Included in: black noodles, surimi, sashimi, bouillabaisse, paella, etc.



Delight made in Austria ...

Nannerl embodies a responsible approach to Austrian culinary traditions and a commitment to a great heritage. The strength and influence of the region is a driving factor – which is why production takes place exclusively in Salzburg.

The outstanding quality is guaranteed by the use of the best raw materials, well-thought-out recipes and secure procurement.

First-class product expertise, technological competence, professional processing, innovative recipes and ideas make life easier for chefs and restaurateurs.

The Nannerl professionals are on an equal footing, enabling them to respond quickly to the needs of restaurants and commercial kitchens and identify requirements.

The result is trendy products and a perfect advisory and delivery service.



ALWAYS WELL INFORMED!

- Original recipes
- Attractive promotions
- Detailed product information

GERMANY

Nannerl GmbH

Breslauer Straße 49
83395 Freilassing
Germany

Phone +49/8654/7708-333

Fax +49/8654/7708-334

info@nannerl.de

www.nannerl.de

AUSTRIA

Nannerl GmbH & Co KG

Gewerbestraße 7
5102 Anthering bei Salzburg
Austria

Phone +43/662/661046-0

Fax +43/662/661046-899

info@nannerl.at

www.nannerl.at

Status: **February 2026**

With the publication of this catalogue, older catalogues lose their validity!

All information is correct at the time of printing and has been carefully checked. The information on the respective packaging is authoritative.

We accept no liability for any typographical or printing errors. Subject to change without notice.

All products shown are serving suggestions and may vary in colour and consistency due to individual processing.



Delight made in Austria



More information at:
lifeline.supply



LIFELINE

nutrition with a plan

www.lifeline.supply

AUSTRIA

Nannerl GmbH & Co KG

Gewerbestraße 7

5102 Anthering bei Salzburg

Austria

Phone +43/662/66 10 46 - 0

Fax +43/662/66 10 46 - 899

info@nannerl.at

www.nannerl.at

GERMANY

Nannerl GmbH

Breslauer Straße 49

83395 Freilassing

Germany

Phone +49/86 54/77 08 - 333

Fax +49/86 54/77 08 - 334

info@nannerl.de

www.nannerl.de



Delight made in Austria